



# COLLECTOR SWEEPER

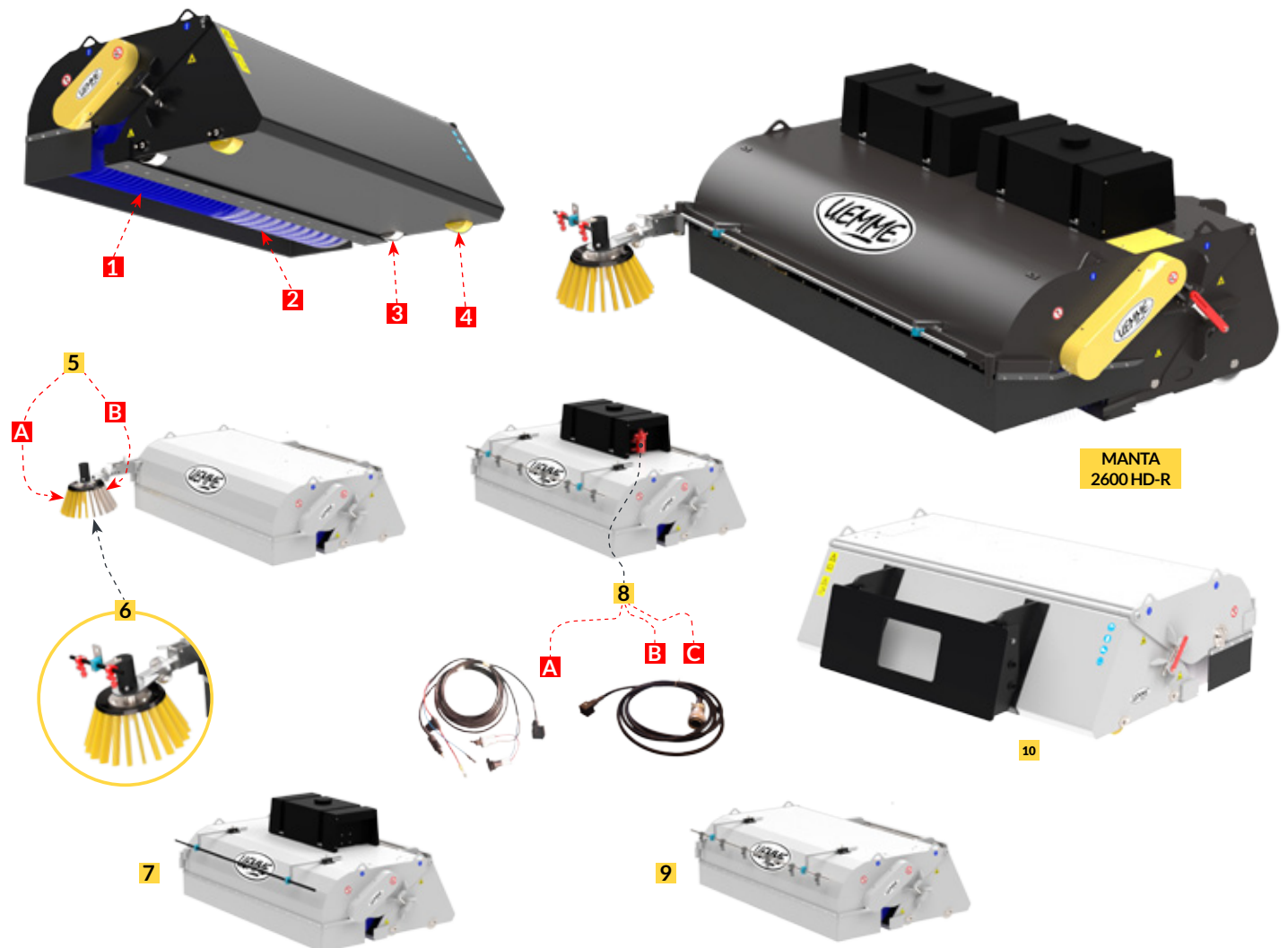
# MANTA HD-R

## TECHNICAL SPECIFICATIONS

- 1 Internal rotor set up with polypropylene brushes
- 2 Internal rotor set up with mixed PPN / steel brushes
- 3 No. 4 sliding steel wheels
- 4 No. 4 sliding steel wheels coated in polyzene

## DESCRIPTION

Collector sweeper for frontal applications on big construction and quarry machines. Each MANTA HD-R model is equipped as standard with **4 sliding wheels** (which can be chosen in **steel** or coated in **polyzene**), **rear floating system**, side and front protection rubber bands, flexible hoses and **double cut knife in wear resistant steel** bolted under the collector bucket. **Chain transmission**.



MANTA  
2600 HD-R



MODELS		MANTA 1800 HD-R	MANTA 2100 HD-R	MANTA 2500 HD-R	MANTA 2600 HD-R
Working width	mm	1800	2100	2500	2600
Total width	mm	1920	2220	2600	2780
Weight without linkage	Kg	570	605	730	1722
Bucket capacity	lt	510	596	706	1200
Brushes	Ø / nr	560 / 38	560 / 45	560 / 52	750 / 57
Maximum oil flow	l/1'	90	90	100	100
Maximum pressure	bar	215	215	245	245
	Tons	3÷6,5	3,5÷8	5÷14	10÷20

**OPTIONS**

**5** Adjustable arm for side cleaning brush with independent hydraulic motor

**A** Ø 580 mm. polypropylene brush

**B** Ø 580 mm. steel brush

**6** Watering kit for side cleaning brush

**7** Falling watering kit complete by 100 lts tank (2 tanks for MANTA 2600)

**8** Pressure watering kit complete by 100 lts tank (2 tanks for MANTA 2600) electric pump and water spray nozzles

**A** Standard electrical kit

**B** 8 pins connector

**C** 14 pins connector

**9** Pressure watering kit with tank already present on the host machine

**10** Floating connetcion plate

**LINKAGE SYSTEMS**

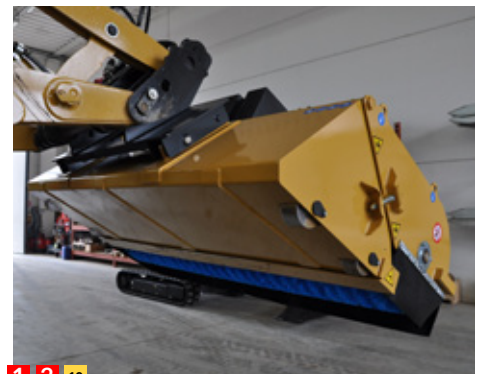
Universal linkage for Skid-Steer Loader

Non universal linkage for Skid-Steer Loader

Wheel L., Backhoe L. & Telehandlers linkage

**APPLICATIONS**

- INDUSTRIAL SECTOR
- BUILDING SECTOR
- ROADS, CYCLE PATHS, HISTORICAL CENTERS, PARKING LOTS CLEANING
- PORT AREAS, COMPANY COURTYARDS, CONSTRUCTION SITES CLEANING
- MILLED ASPHALT COLLECTION
- GRAVEL AND DEBRIS COLLECTION
- DUST AND SOIL REMOVAL FROM ROAD SURFACES



**1 3 10**



**7 8**

